

Important Safety Information for Users of Bashlin Climbers and Accessories



- WARNING -



For your personal safety, this booklet must be read and all of the information completely understood before using these products.



Table of Contents

Important Safety Information	1
General Information for Bashlin Climbing Equipment.....	1
Climbers	2
Sizing Your Bashlin Climbers.....	3
Climber Pads	3
Strap Climber Pad Attachment.....	3
Hook-n-Loop Pad Attachment.....	4
Wearing Hook-Loop Pads.....	5
Tips for Using Bashlin Climbers	5
Inspecting Your Bashlin Climbers and Pads	6
Using the Bashlin Gaff Gauge	8
Maintenance of Bashlin Climbers.....	9
Sharpening the Gaffs on Your Bashlin Climbers.....	9
Shaping the Gaffs on Your Bashlin Climbers	10
Before Returning Your Climbers to Service	10
Pole Cut Out Test	10
Replacing Bashlin Gaffs.....	11
Installing the New Bashlin Gaff	11
Replacing Bottom Straps on Bashlin Climbers.....	12
Inspecting and Shaping Bashlin 14T Tree Gaffs.....	12-13
Installing 89N Bottom Straps	14
Installing 87N Bottom Straps	14-15
Installing the Bashlin BHP Heel Covers	16
Inspection Record	18

*Se hable Español, (Para una versión española de este folleto de la seguridad, contacta las Industrias de Bashlin S.a. por favor.)

Nous parlons Français (Pour une version française de ce livret de sûreté, contacter les Industries de Bashlin Inc s'il vous plaît.)

Other languages upon request.

Important Safety Information

This information is intended for the user of the products indicated. It must be included with the product, read and understood by the user prior to placing this product into service. This equipment is to be used by properly trained, professional workers. The information in this booklet, manufacturer's demonstrations, sales seminars, catalog information or other promotional materials may be a part of but does not constitute proper or complete training in the use of these products.

- **WARNING** -

Lack of proper training or the incorrect use and/or abuse of these products may cause accidents, injury or death.

The user must inspect this equipment before each use. Any equipment found to be worn out, damaged, subject to shock loading or in any way questionable, must immediately be removed from service or accident, injury and even death could result. Specific guidelines for inspection are included in this information booklet.

- **WARNING** -

Bashlin equipment must not be altered. Altering or modifying these products voids all warranties, may affect performance, and could cause accident, injury or death to the user.

General Information for Bashlin Climbing Equipment

These products are fabricated from leather and synthetic woven materials and rated metal hardware. They are assembled by riveting and/or sewing. The thread used in assembly is of a contrasting color to permit easy inspection.

These products are manufactured in accordance with OSHA, ANSI, ASTM F887 and/or CSA standards and are labeled as such. Please contact us for information regarding specific applicable standards for each product.

- **WARNING** -

Shock loading is extremely damaging to climbing equipment. Any belt, harness, pole strap, APL or climber that has been shock loaded must be removed from service.

- **WARNING** -

Exposing the equipment to chemicals may produce a harmful effect. Avoid using the equipment around moving machinery, electrical hazards, sharp edges or abrasive surfaces.

Climbers

Your Bashlin climbers are known the world over for their comfort and superior performance. Whether your choice is the popular BD14B, or one of the rugged steel climbers, BD12 or BD16, you have the proven Bashlin 17° angle gaff, roomy comfortable stirrup and innovative offset design.

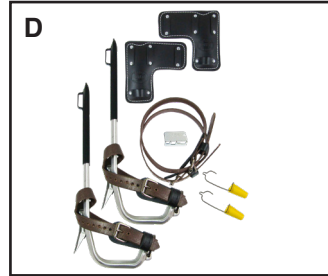
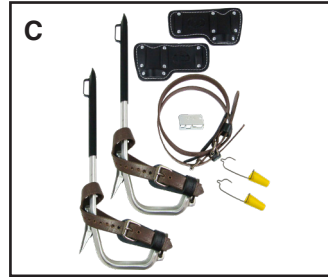
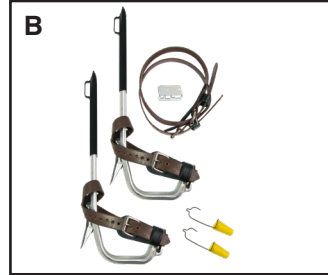
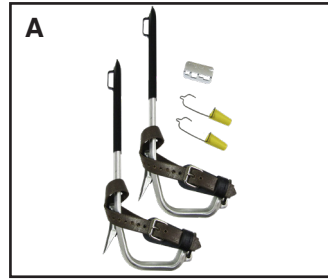
All Bashlin Pole Climbers come with the following items standard; **(A)**

- 1 pair of climbers with the bottom nylon straps installed
- 1 pair of gaff guards
- 1 pair of top slides with 4 screws in a small packet
- 1 gaff gauge (Pole Climbers Only)

If any of these listed items are not in your box, please contact us immediately.

In addition, these climbers are sold as sets and include the following items designated by part number

- **BD14B-1N Climbers** with bottom straps. **(A)**
- **BD14B-2N Climbers** with bottom straps and top straps. **(B)**
- **BD14B-3N Climbers** with bottom straps, top straps and #110DX black pads. **(C)**
- **BD14B-4N Climbers** with bottom straps, top straps and #130DX black pads. **(D)**
- **BD14B-5N Climbers** with bottom straps, top straps and #140DSX black pads. **(E)**



Sizing Your Bashlin Climbers

For maximum comfort and performance, the climber shank must be adjusted to fit your leg. This is done by performing the following steps;

- Place the adjustable top slide on the shank.
- Put your foot in the stirrup and move the top of the adjuster to a point two fingers below the bottom of the knee bone. **(F)**
- Holding the top slide in place, install one of the screws, recheck the position, then install the second screw.
- Adjust the second shank and tighten screws.
- The shank should be low enough to keep the pad from rubbing your knee bone. If you are experiencing excessive rubbing on the knee bone, lower the top slide.
- The standard adjustment for Bashlin climbers per ASTM F887 is 14 3/4" to 18". *If by adjusting your climbers to the proper height, the top slide is in the last hole, or if the climbers are simply too short, you must use the longer top slides, number 14ATSB, for aluminum climbers or 16ATS for steel.* Using the longer top slides gives you a better fit and reduces the flexing of the shank section of the climber, especially in the critical section 4-8" above the gaff. (See Climber Inspection).



Climber Pads

Bashlin climber pads reduce the shin discomfort caused by standing on climbers for extended periods of time.

Strap Climber Pad Attachment (110, 130, 140, 145 or 150 series pads)

Strap pads are held on your Bashlin climbers with a 1" nylon strap that has a tongue buckle closure. The strap is normally oriented with the buckle close to the front of the pad. The pad should wrap around the front of your leg and inside of the shank.



Hook-n-Loop Pad Attachment

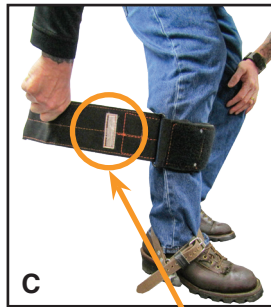
(145ACV/BCV/FCV-145ACVW/BCVW/FCVW or 150V series pads)

- With the top slide secured to the climber, insert the shank into the tunnel of the pad until the top slide loop is seated in the tunnel slot or steel insert. Squeezing the tunnel will allow the climber to slide in easier. **(A)**
- Feed the climber pad retaining strap through the top slide loop and/or the steel insert and pull tight to secure the shank to the pad. **(B, C)**
- To assist in sliding the strap through the loop, place a piece of paper or other thin material over the end of the strap while sliding through the top slide loop. A pair of pliers can be used to pull the strap. **(D)**



Wearing Hook-n-Loop Pads

- Step into the climber and attach the bottom strap securely to your boot. **(A)**
- Feed the free end of the pad with the hook through the steel loop. **(B)**
- Pull the free end through the steel loop until the pad is snug on your leg. **(C)**
- Secure the free end around the pad, mating the hook to the loop on the body of the pad. **(D)**
- Check the security of the climber and pad by taking a step or two on the structure you are climbing before ascending in them.



WARNING

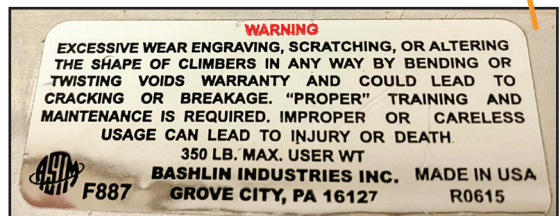
MINIMUM WRAP LOCATION: This tag must pass through the metal cinch loop to ensure proper hook/loop contact. Failure to achieve the minimum wrap may cause release resulting in serious injury or death.

B BASHLIN INDUSTRIES INC.
Grove City, PA 16127 724-458-8340

WRAP TAG

Tips for Using Bashlin Climbers

- Only use a Bashlin Gaff Gauge on Bashlin Pole Climbers.
- Remove from service any climbers that have come in contact with an electric arc.
- Never etch or scratch the critical section of the climber shank, 4-8" above the gaff. Points of stress will be created, and flexing of the shank will cause a fracture and finally premature failure of the climber shank. **(A)**



- Bashlin BD14B forged aluminum alloy climbers are 30% lighter than steel or titanium. Aluminum yields a better performing climber with durability that is comparable to steel or titanium.
- Do not use aluminum alloy climbers with climbing boots that have a steel heel guard. The heel guard wears deeply into the stirrup of the climber and will require premature replacement of the shanks.
- Bashlin requires that any other manufacturer's equipment used with our products be made in accordance with the ASTM F887 Standards.
- Don't violate safety rules.
- Keep dirt and debris cleared from the hook and loop material with a soft brush. Debris can compromise the performance of the hook and loop material, even causing the strap to release.

⚠️ - **CAUTION** - ⚠️

The average useful life of Bashlin Climbing Equipment based on normal usage:

Tool Belts	5 - 8 years
Climbers	2nd set of gaffs
Pole Straps	1 - 4 years

Inspecting your Bashlin Climbers and Pads

Your climbers must be inspected prior to each use.
Your climbers should be removed from service until repaired or replaced if you find any of the following:

- **Climber straps** that are worn, cut, burned, have elongated holes, or loose buckles.
- **Worn climber pads** that have broken rivets or loops. **(A)**
- **Hook-n-Loop pads** sleeve retaining strap is damaged or missing.



- **Hook-n-Loop closure** will not stay secured, climber pad has broken stitches, or steel loop on top slide is damaged or not secured to pad.

- **Climber shanks**

Inspect critical area of the shank, (4-8" above the gaff) for deep scratches or cuts. Flex the shank visually inspecting this area for any cracks. **(A)** You can also run your thumbnail along the edges to look to find any indentations or marks that could indicate a crack in the shank section. A crack will form prior to the shank breaking. Close and regular inspection could reveal the weakness before it breaks in the field.



- **Stirrup**

If the lettering is worn off the foot tread of the BD14B climber, carefully inspect for adequate thickness. **(B)**



Compare the stirrup section with a new climber shank. **(C)**

The minimum measurement is 7/16" for continued use.

- **Loose gaffs**

- **Short or improperly shaped gaffs** as determined by using Bashlin's No. 5 gauge.

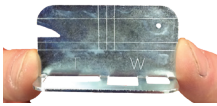


Shanks should be replaced when they no longer meet the inspection criteria or when the second set of gaffs wears out.



Using the Bashlin No. 5 Gaff Gauge

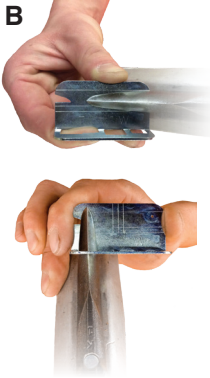
A



A. Length

Place the gaff on the gauge as indicated in the picture. The tip of the gaff should extend beyond the line furthest from the edge, indicating the length is at least 1 1/4". If the gaff is too short it must be replaced.

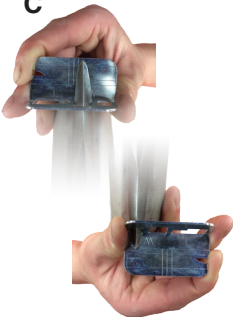
B



B. Thickness

Insert the gaff into the larger portion of the section of the gauge marked with a "T". Make sure the gaff is lying flat against the gauge. When the gaff is placed in the larger opening the cross section of the gaff roughly 1" from the tip is being measured. The tip should fall between the edge of the gauge and the first line. If it falls over the edge, it is too thin and should be replaced. If it falls short of the line, it is too thick and must be reshaped. Repeat the procedure placing the gaff in the smaller portion of the section marked with a "T". Now the thickness of the gaff is being measured at a point roughly 1/2" from the tip. The end of the gaff should fall between the two parallel lines above the "T". If it is long, replace the gaff. If it is short, shape the gaff. (See Maintenance Section)

C



C. Width

Repeat the general procedure used to measure the thickness of the gaff on the section of the gauge marked with the "W". Slide the gaff into the larger portion of the "W" section. Make sure the gaff is flat on the gauge. The tip should fall between the end of the gauge and the first line. If it goes over the edge, replace it. If it falls short, shape the gaff. Continue the inspection by placing the gaff in the smaller portion of the "W" section. Replace the gaff or reshape it as is required by the gauge. (See Maintenance Section)

D



D. Shape of the tip of the gaff

There is a small section cut out of the left side of the gauge. This is used to determine if the tip of the gaff is shaped correctly. Place the tip of the gaff in the cut-out as indicated. The shape of the tip should approximate the curve of the cut-out. The shape of the tip can be confirmed by testing the tip using the Pole Cut-Out Test shown on page 10.

E



E. Size of the tip of the gaff

There is a small hole in the gauge used to determine if the tip of the gaff is thick enough. Simply place the small hole on the right side of the gaff gauge on the tip of the gaff. If the tip of the gaff protrudes far enough through the hole that you can feel it, the tip is too thin and may break during normal use. The gaff should be removed from service.

⚠ - WARNING - ⚠

Climbing equipment that does not meet inspection criteria must be removed from service.



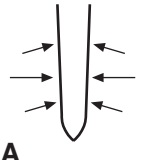
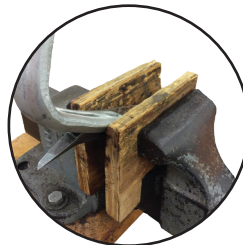
Bashlin's No. 27 Gaff Shaping Kit has all of the tools needed to maintain your gaffs

Maintenance of Bashlin Climbers

Your climbers, especially the straps and pads should be cleaned and the pads oiled regularly. Replace any old or worn screws, sharpen and shape your gaffs as needed.

Sharpening the Gaffs on your Bashlin Climbers

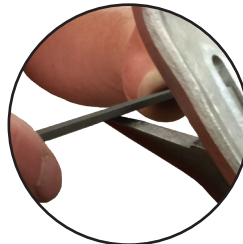
Using wood blocks to protect the shank, put the climbers in a vise with the underside of the gaff exposed (A). Place a 6" mill file across the gaff, against the heel and draw it towards you, following the rounded shape of the gaff tip. Filing in this method sharpens (B) the edges of the gaff and maintains the correct shape of the tip (C). If you prefer the edges to be sharper, use a honing stone.



A



B



C

Shaping the Gaffs on your Bashlin Climbers

Block the climber in a vise and turn the climber over so the ridge of the gaff is exposed. Using the 6" mill file, make smooth rounded cuts and remove as much material as is needed to size the gaff to fit correctly into the gauge. Never file the ridge on the back of the gaff. Check the gaff on the gauge, turn the climber over and sharpen the edges one more time.



Your Climbers should be field tested before returning to service.

Pole Cut Out Test

1. Wearing a pair of gloves, attach the bottom strap of one of your climbers.
2. Grasp the top of the shank and touch the tip of the gaff against the pole at a comfortable height that will be easy to step into.
3. Holding the top of the shank against the pole, step into the stirrup. Steady yourself with your other hand.
4. The properly shaped gaff should cut into the pole within an inch. An improperly shaped gaff will break out of the pole.

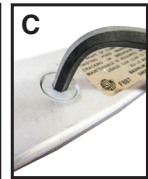
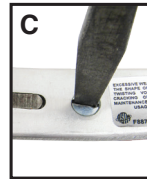
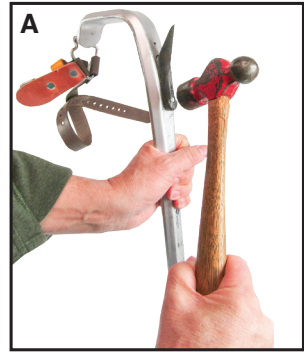


For additional information regarding the care and maintenance of pole climbing equipment, refer to the Lineman's and Cableman's Handbook by Kurtz and Shoemaker, (Bashlin No. 831).

Replacing Bashlin Gaffs

Tools needed include a vise, hammer, 2 blade type screwdrivers with 1/4" and 1/2" blades, a 12" adjustable wrench. You may need a 3/16" Allen Wrench.

1. Remove the adjustable top slide and pad from the climber.
2. Holding the shank in one hand, strike the gaff on the outside of the shank, at the point where the large screw is in the gaff. This will help loosen any corrosion between the screw and the gaff. **(A)**
3. Place the climber shank in the vise, placing the jaws on the gaff, with the screw up and exposed. **(B)**
4. Use a square shank screwdriver that completely fills the slot. **(C)** Hold the screwdriver tightly in place and loosen the screw using the wrench on the shank. Avoid stripping the screw by keeping constant pressure on the screwdriver. If your gaff screw has a Hex head screw you will need a 3/16" Allen wrench. **(C)**
5. Remove the smaller screw completely.
6. Lightly tap the top of the gaff, then pull the top away to remove it from the shank. **(D)**



Installing the New Bashlin Gaff

1. Insert the gaff into the slot of the shank.
2. Drive the gaff into position. This is done by either placing the lip of the gaff on a hard edge, or placing the gaff in a block of wood and driving the gaff into position by striking the top of the shank with a hammer. When the holes are aligned, it is in the proper position.
3. Insert the large then the small screw, and tighten.
4. Replace the top slide adjuster and pads.



Inspecting and Shaping Bashlin Tree Climbers



Bashlin Tree Climbers are available in offset steel BD16BT, offset steel with a twist BD16BCT, and lightweight aluminum BD14BT.



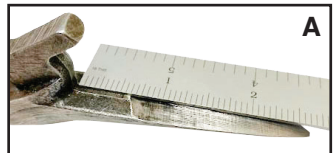
Bashlin No. 14T Tree Gaffs differ from the traditional No. 14 Pole Gaffs in both length and shape as shown in the images above.

Bashlin Tree Climbers must be inspected prior to each use. Please follow the inspection procedures outlined on pages 6 and 7 in this booklet.

Inspecting Bashlin 14T Tree Gaffs

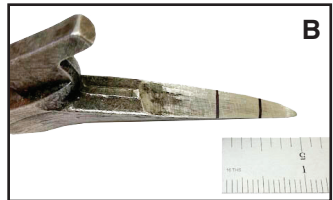
Length

Measure the bottom face of the gaff from heel to tip (**A**). If the gaff is shorter than 2-1/4", the gaff must be removed from service.

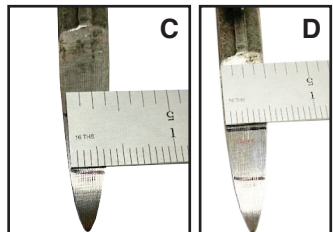


Width

Mark two lines across the bottom face of the gaff approximately 1/2" and 1" from the tip of the gaff (**B**).



To verify width, measure across each mark. The width of the gaff at the 1/2" mark should be approximately 5/16" (**C**). The width at the 1" mark should be approximately 7/16" (**D**).



If either measurement is short, the gaff is too narrow and must be removed from service. If either measurement is long, reshape the gaff.

Thickness

Continue the 1/2" mark and the 1" mark up to the gaff spine on both sides of the gaff. Marks should be perpendicular to the bottom face of the gaff (E).



To verify thickness, measure the length of each mark. The thickness of the gaff at the 1/2" mark should be approximately 1/4" (F). The thickness of the gaff at the 1" mark should be approximately 3/8" (G).



Measure and evaluate both sides of the gaff to ensure that neither side is too thin.

If any measurement is short, the gaff is too thin and must be removed from service. If any measurement is long, reshape the gaff.



Climbing equipment that does not meet inspection criteria must be removed from service.

Shaping your Bashlin Tree Gaffs

Block the climber in a vise as shown on page 10 in this booklet. Using a 6" mill file, make smooth rounded cuts to shape the gaff.

Never file the ridge on the back of the gaff and remove only as much material as needed to shape the gaff.

After you have reshaped your gaff use the Pole Cut Out Test on page 10.

If you need to replace your gaffs follow the instructions on page 11.

Replacing Bottom Straps on Bashlin Climbers

Your Bashlin Climbers come from the factory with bottom straps installed. Over time they will wear out and require replacement. Before replacing the straps, inspect your shanks per the instructions. If the shanks are worn out, remove them from service and destroy them.

**Only work on one shank at a time.
Use the other shank as a pattern for your work.**

Installing 89N Bottom Straps

1. If your climbers have a triangle ring, remove it using a hack saw or bolt cutters. Inspect the lug for cracks or excessive wear.
2. Block the climber in a vise with lug exposed.
3. Using a screwdriver, open the split ring and slide through the hole. The buckle should be toward the front of the shank. **(A)**
4. Completely thread the ring onto the shank.
5. Repeat the procedure on the other shank.



Installing 87N Bottom Straps

1. Inspect the triangle ring for excessive wear, cracks, burns or deformation. If there is any question regarding the condition of the ring, do not use it. Either remove the shank from service or if it is in otherwise good condition, consider the use of the 89N bottom strap assembly.
2. Remove and replace the long strap. Tighten the screw-type rivets **(B)**.



3. Remove the buckle strap. Assemble the new buckle assembly on the shank using the other shank as a pattern. It is easiest to place the leather keeper under the strap, then insert the screw-riquet in the hole closest to the ring **(C)**, insert the second rivet **(D)**, and tighten both screws.



4. Perform steps 1, 2, and 3 on the other shank.

5. Once you are certain the assemblies on both shanks are correct, tighten all of the rivets, and clip the ends off of the screws **(E)**. One at a time, place the head of the screw on a hard surface and round off the clipped ends of the screw-rivets with a hammer **(F)**. This will keep the rivet from loosening up. A rivet working loose may cause an accident.



6. Finally, remove any sharp edges on the clipped end of the rivets using a file, sand paper or emery cloth.



Installing Bashlin BHP Heel Covers



Bashlin BHP Heel Covers are designed to help reduce injury to the ankle and Achilles's tendon while climbing. Made from PVC material that is both durable and flexible, these heel covers are sold in pairs marked Left and Right and are compatible with most pole and tree climbers.

1. With the BHP facing you, insert the climber shank through the tunnel loop and slide it down to the gaff. **(A)**
2. Push the climber strap down through the outside slot in the cover and pull it through **(B)**.
3. Push the climber strap down through the outside slot in the cover and pull it through **(C, D)**.

